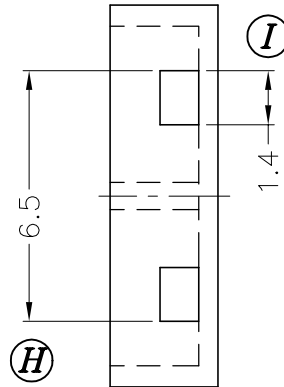
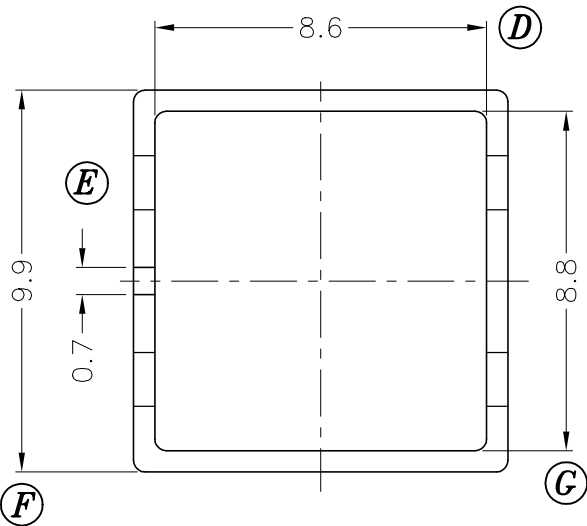
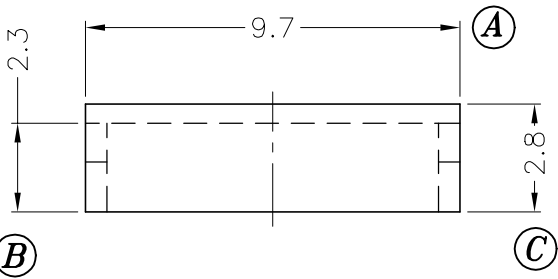
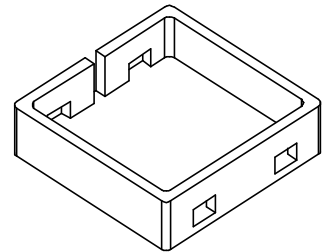


PART S-1204

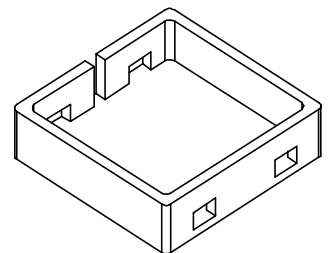


DRAWING NO:	MATERIAL:	ORIGIN:
C-105-2	LCP E4008	DG



C-053.001L(B-053C)

DRAWING NO:	MATERIAL:	ORIGIN:
C-105-1	PBT 4130	DG



REV.	REVISIONS	REC.	REV.	REVISIONS	REC.
1	DRAWING NO. S-1204A-->C-105				

DRAWN & DRAFTED BY YAN WEI MING	TOLERANCES		ANGLE:	TITLE:	
	0<L≤4 ±0.1	pin pitch	±1°	COVER EF-12.6	
CHECKED & APPROVED BY ZHONG YU	4<L≤16 ±0.2		UNIT:	BOBBIN MATERIAL:	UL REC.
	16<L≤63 ±0.3	MM	LCP 6130	UL 94V-0	
ORIGIN:			DG	PIN MATERIAL:	PIN TENSION LOAD:
			DATE:	DRAWING NO.	REV.
TEL:886-2-22990545      FAX:886-2-22990546			APR.23 '2003	C-105	1



PIN SHINE INDUSTRIAL CO., LTD.

TEL:886-2-22990545

FAX:886-2-22990546